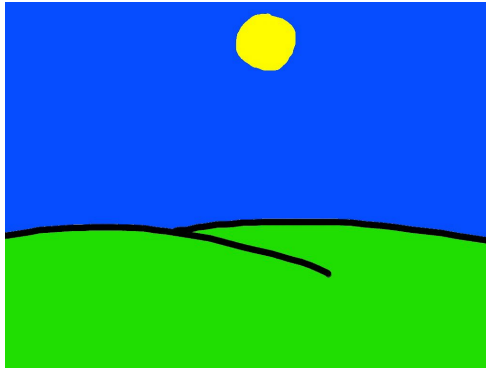
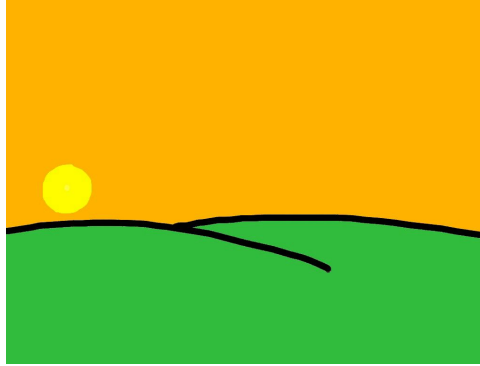


0:00
6:00
12:00
18:00
24:00

> morning

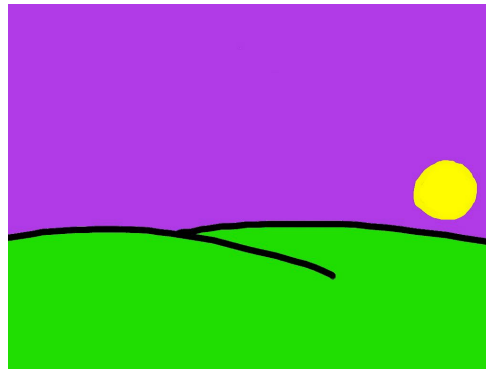


0:00
6:00
12:00
18:00
24:00

> afternoon

0:00
6:00
12:00
18:00
24:00

> evening



0:00 / night

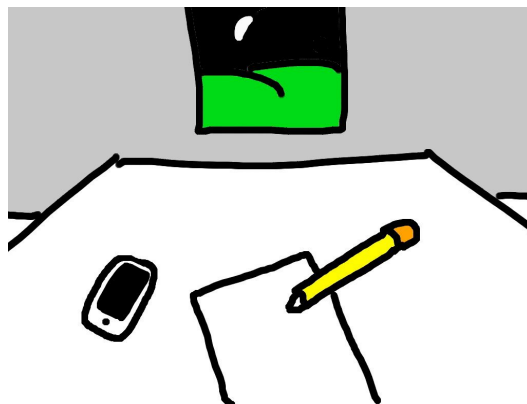
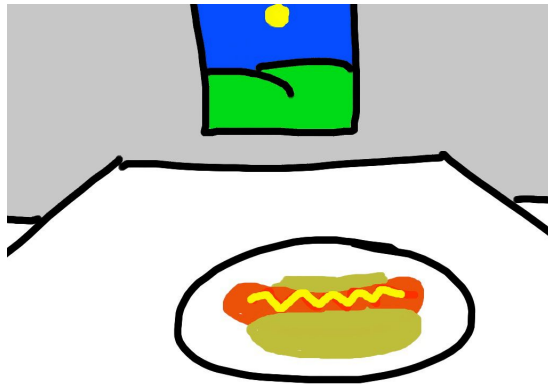
6:00

12:00

18:00

24:00 / night

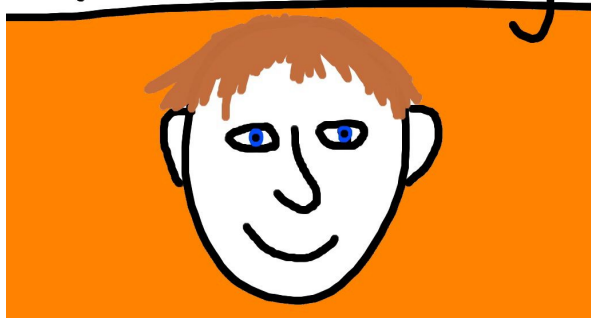
Label the four times of day: (They are in order.)



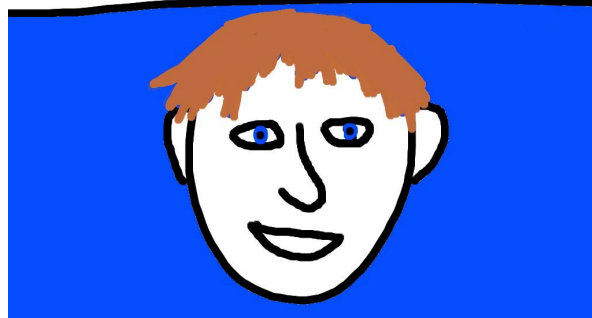
When do we eat breakfast?
When do we eat lunch?
When do we eat dinner?
When do we sleep?

in the _____
in the _____
in the _____
at _____

Good morning



Good afternoon



Good evening



Good night

